



# The Sentinel

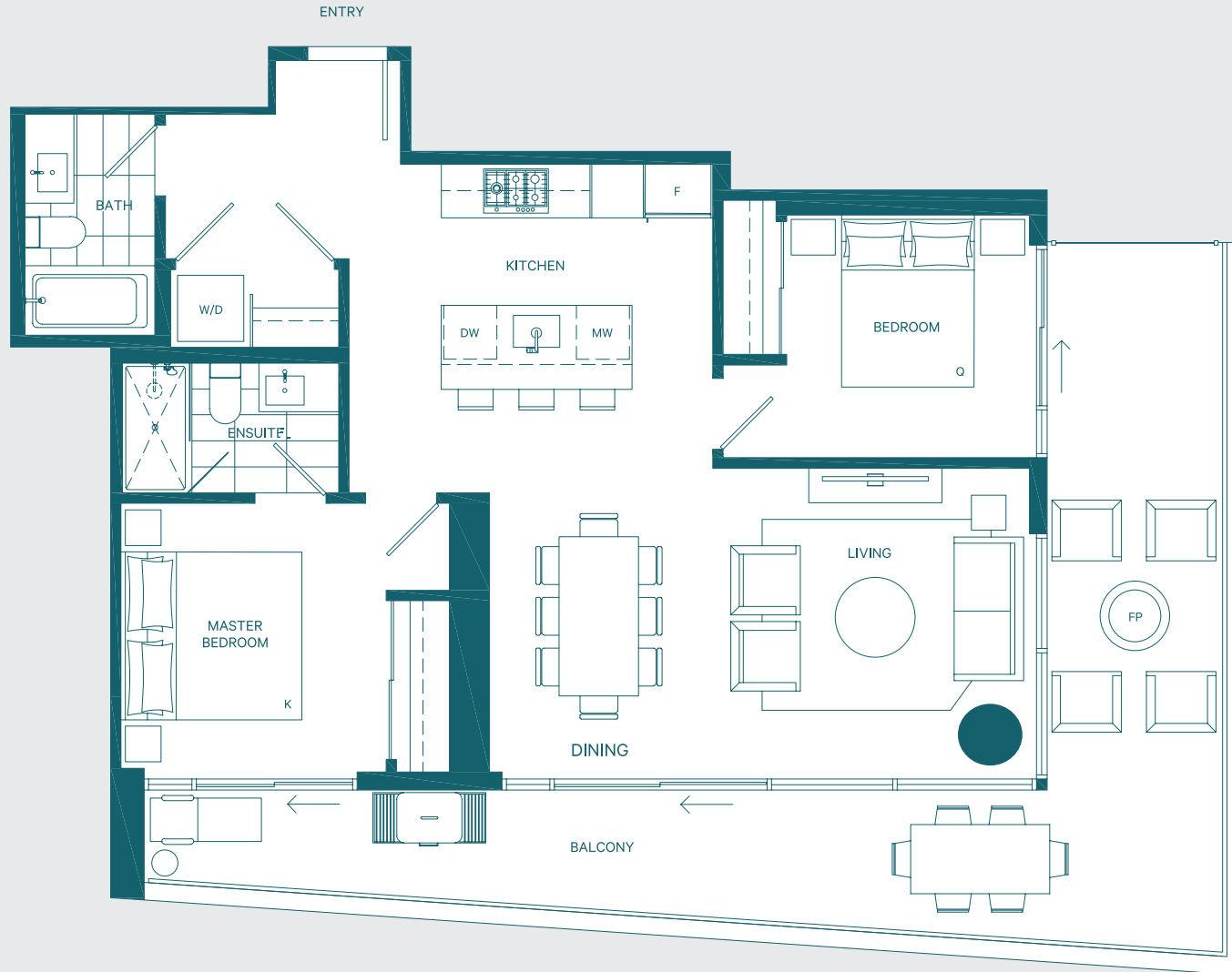
WEST VANCOUVER

## Home 04 Plan D

*Two bedroom*

TOTAL  
INDOOR: 898 SQ FT  
OUTDOOR: 339 SQ FT

KLAHANIE COURT



# Features list.

## MORE LUXURY

Dramatic floor-to-ceiling windows for maximized views of Vancouver Island, the North Shore mountains, Lions Gate bridge, and Downtown Vancouver

Highly efficient window systems for comfort and sound benefits for homeowners

A four-pipe air-conditioning system for year-round climate control in all of The Sentinel's homes

Three high-speed elevators to get you from your front door to your destination faster

Spacious interiors allow for a king size beds in master bedrooms

Huge decks in all homes in The Sentinel.

Full service concierge to meet your needs and maintain your security.

Every parking stall offers access to EV charging hook-up

## DESIGNER DETAILS

Striking exterior lighting that adds elegance to The Sentinel's architecture and modern design

Livable, functional, furnishable homes — every detail of The Sentinel was thoughtfully considered by Denna Homes' partners DA Architects + Planners and CHIL Interior Design.

The exterior of the building has been designed with a creative and artistic finish to pay homage to the surrounding forests of the North Shore

Typical Homes:

The Residences

Choose from two contemporary colour schemes

Laminate flooring throughout (except bathrooms)

## KITCHENS

Appliance package:

- 30" to 36" integrated fridge with freezer by Liebherr (36" in 3- & 4-bedroom residences)
- 30" built-in wall oven by AEG
- 30" five-burner gas cooktop with integrated hood fan by AEG
- 24" microwave oven by Panasonic with trim kit
- 24" integrated dishwasher by AEG

Two-tone cabinetry with full-height wood veneer pantry and integrated refrigerator.

Soft close wood laminate cabinetry and drawers

Stylish and durable polished quartz kitchen countertops and with a matching large format stone backsplash

Recessed pot lights in ceilings and undermount cabinet lighting provide optimal light for prepping and cooking

Polished chrome kitchen faucet with pulldown spray

Contemporary, large basin under-mount stainless steel sink

Full-extension hidden garbage and recycling center!!!

## BATHROOMS

Custom vanity mirrors with integrated lighting and storage

Large format porcelain tiles for bathroom walls and floors.

Soft close wood laminate cabinetry and drawers

Quartz countertops in all bathrooms

Polished chrome fixtures by Grohe with rain showerheads

Toilets and undermount sinks by Duravit for all bathrooms, with stylish above counter sinks in all powder rooms

Sleek above counter sink by Kohler in powder rooms

## LAUNDRY

High-efficiency front load washer and dryer by LG

Porcelain floor tile in all washer/dryer closets and laundry room

Polished quartz countertops in Sub Penthouse homes

## ENSUITES

Custom vanity mirrors with integrated lighting and storage in master ensuite bathrooms

Modern and elegant frameless shower glass

Polished quartz countertops

Large format porcelain tiles in all bathrooms

Polished chrome fixtures by Grohe with rain showerheads

## AMENITIES (UNDER DESIGN)

Stunning stone-lined grand entry lobby with a full-service concierge for a resort-style experience at home

Stylish Amenity lounge with catering kitchen, dining area, fireside sofa seating and bar kitchen

Media lounge with large high-definition TV and wet bar kitchenette

Three fully-furnished guest suites with kitchenette to offer additional space for guests

Bike lockers for residents

Every home comes with a parking stall ready for your electric charging station

Dog wash room is available with a separate entrance to provide a cleaner and healthier environment inside the building.

Extensive indoor Spa Area including a yoga studio space, fitness room, hot tub and sauna

A party room with a catering kitchen right beside it will make The Sentinel a special and warm place for the unforgettable nights

Significant outdoor seating areas with water features and fire bowls perfect for meeting with new neighbours or relaxing on your own

Courier Package storage system

## Additional Comforts

Sleek roller blinds in all units

Dedicated car, bike and pet washing stations throughout The Sentinel

Solid-core entry door for added privacy and security

All homes include USB outlets throughout 2-5-10 Warranty

- Two years on labour and materials
- Five years on building envelope
- Ten years for structure